



DUNEDIN VENUES

VENUES & SPACES

Business Events Information Document

CONTENTS

Dunedin Overview	3
Map	4

THE DUNEDIN CENTRE

Dunedin Town Hall	6
Glenroy Auditorium	8
Conference Room 1 & 2	10
Fullwood Room	12
The Terrace	14

FORSYTH BARR STADIUM

The Pitch	17
Forsyth Barr Stand (East)	19
Small Corporate Suites	21
Large Corporate Suites	23
Alex McMillan Suite	25
Logan Point Suite	27
East Lounge	29
West Lounge	31
Our Services	33
Get in Touch	34



OVERVIEW OF DUNEDIN



Dunedin prides itself on being New Zealand's leading center for education, heritage, arts and culture. It is also the commercial hub of the greater Otago region and gateway to the diverse wildlife of the Otago Peninsula.

Amongst Dunedin's attractions are fine examples of unspoiled Edwardian and Victorian architecture, rare and unique wildlife, and stunning coastal beauty. The vibrant city center is bustling with restaurants, cafes, and unique meeting and conference venues.



OUR VENUES

- | | | | |
|-----------|---|-----------|--|
| 1. | DUNEDIN CENTRE
1 Harrop Street, Central Dunedin | 2. | FORSYTH BARR STADIUM
130 Anzac Avenue, Central Dunedin |
|-----------|---|-----------|--|
-

HOTELS

- | | | | |
|-----------|---------------------------|-----------|-----------------------------|
| 3. | Kingsgate Hotel | 6. | Scenic Hotel Southern Cross |
| 4. | Distinction Hotel | 7. | Fable Hotel Dunedin |
| 5. | Scenic Hotel Dunedin City | 8. | EBB Dunedin |



THE DUNEDIN CENTRE

DUNEDIN TOWN HALL

VENUE OVERVIEW

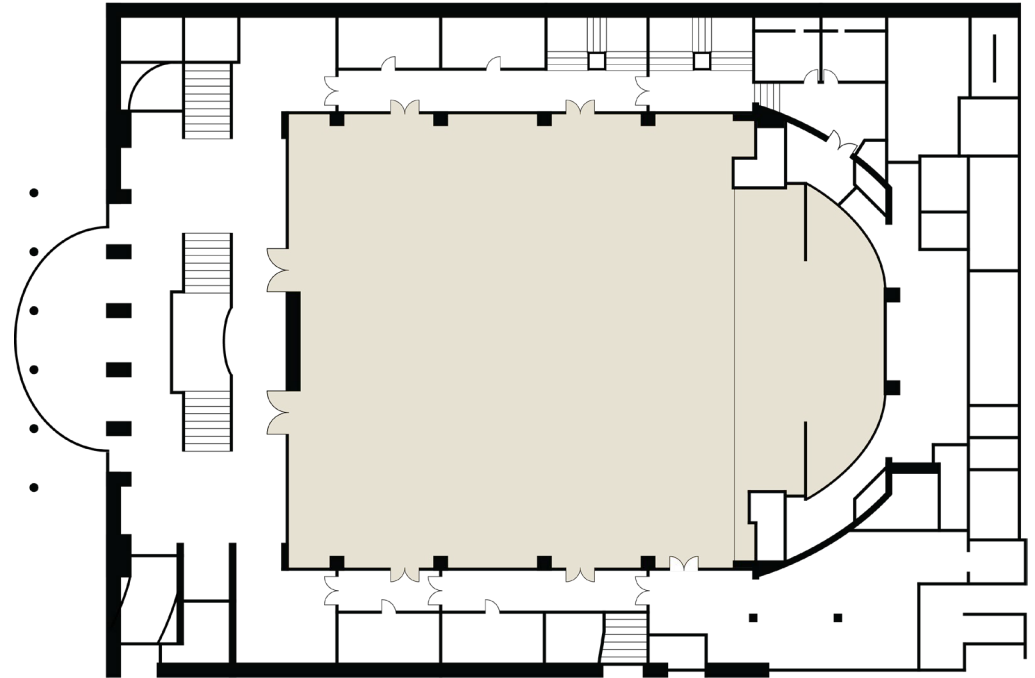
The Dunedin Centre's largest facility.

The Town Hall offers versatility for hosting conferences, concerts, live performances, exhibitions, balls, and social functions. It has a capacity of up to 2,145 guests.

The venue features a built-in stage (which can be extended) and excellent acoustics. It also has several dressing rooms backstage. Many original historical features make this a very special venue – such as the impressive barrel-vaulted, coffered ceiling, and 'Norma' a symphonic organ built in 1919.

AV

Only basic AV equipment is included in the venue hire and we recommend you have an on-site AV technician to assist with your event. We recommend you use Strawberry Sound, they are our preferred but not exclusive AV partners.



DUNEDIN TOWN HALL

Area m2	Theatre	Banquet	Cabaret	Cocktail	Classroom	Trade
664	2145	550	360	1000	300	35 - 60



GLENROY AUDITORIUM

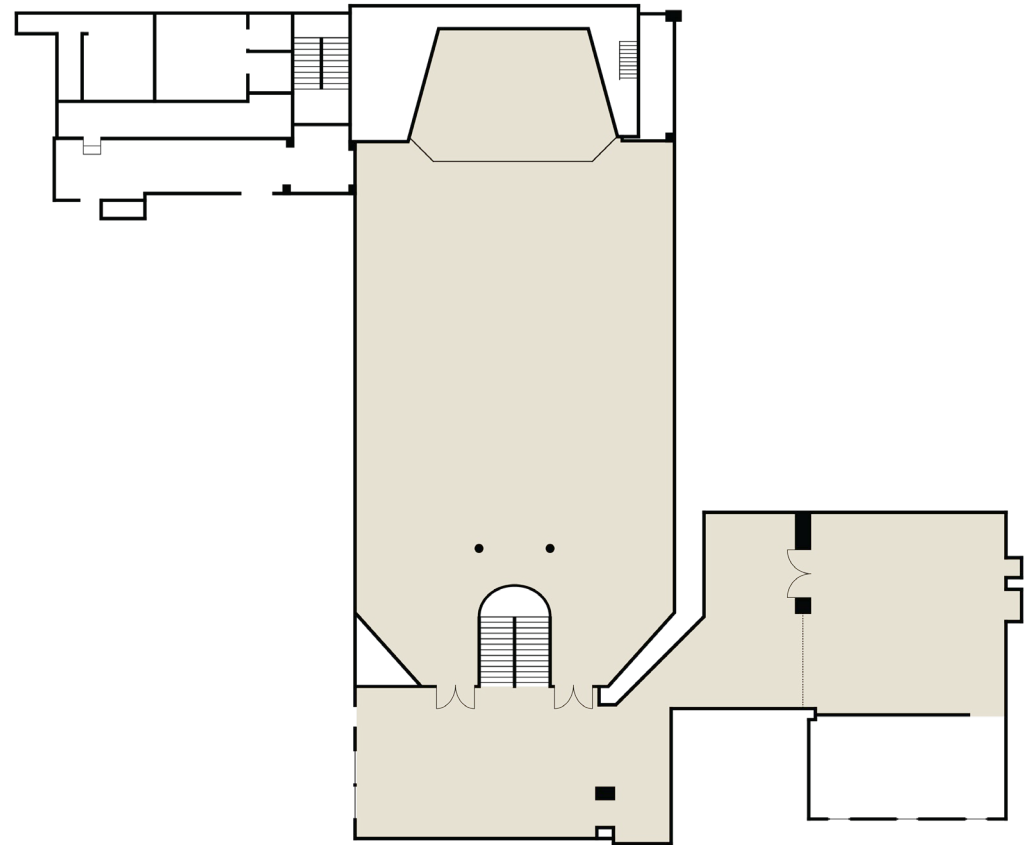
VENUE OVERVIEW

The Glenroy Auditorium is an ideal space for medium sized conferences or live performances, seating 400 people whilst maintaining an intimate feel.

It has a built in stage and boasts excellent acoustics and equally suited for banquets, conferences, balls, receptions, exhibitions and trade displays.

AV

For any AV requirements we would recommend Strawberry Sound They work regularly in our venues and have excellent knowledge and experience of providing AV equipment and operation for conferencing.

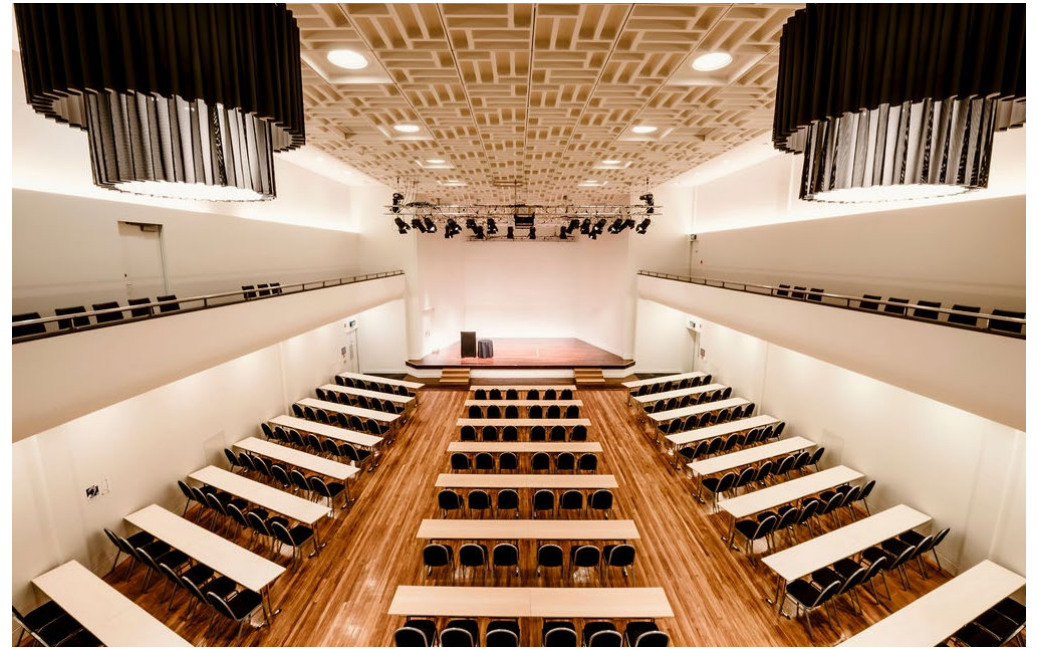


GLENROY AUDITORIUM

Area m2	Theatre	Banquet	Cabaret	Cocktail	Classroom	Trade
330	422	220	160	600	200	23-30

GLENROY EXTENDED FOYER

Area m2	Theatre	Banquet	Cabaret	Cocktail	Classroom	Trade
77	30	30	24	50	15	4



CONFERENCE ROOM 1 & 2

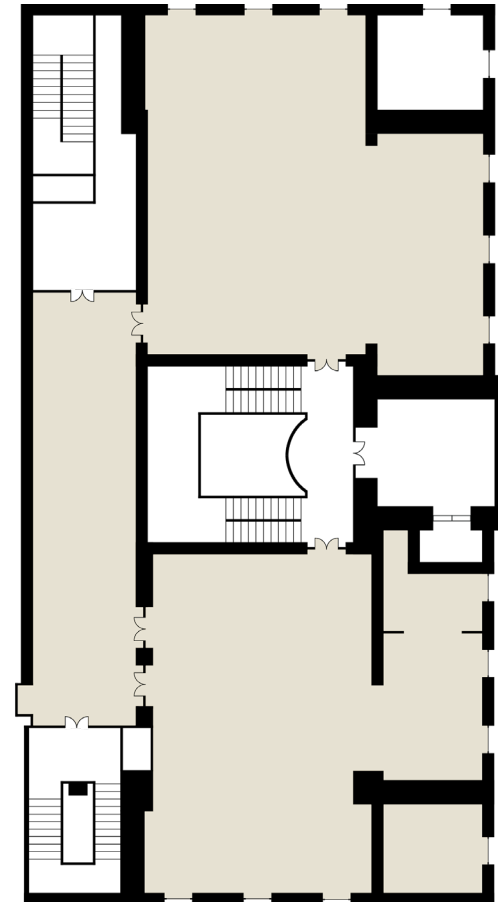
VENUE OVERVIEW

Conference Rooms 1 and 2 are purpose built for meetings and seminars. Audio visual facilities allow guests to arrive, plug and play with ease.

Both rooms, which are adjacent, are perfect for breakout sessions during conferences and ideal for small cocktail parties. The rooms are accessible from both the Octagon and Harrop St.

AV

- Fully equipped with a screen, projector lectern, and one wireless handheld microphone.
- Wi-Fi available.
- If you have additional AV requirements, we recommend Strawberry Sound.

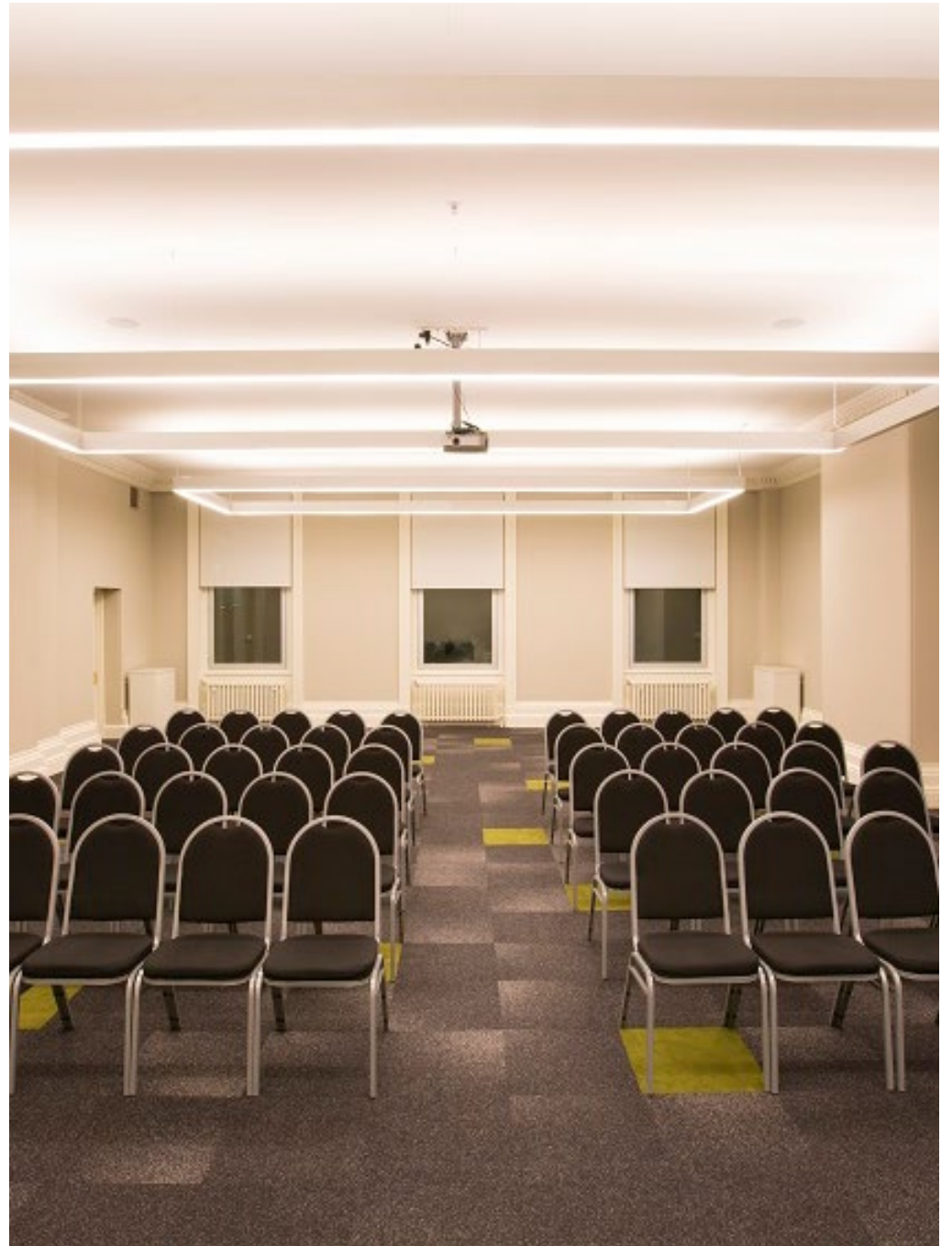


CONFERENCE ROOM 1

Area m2	Theatre	Banquet	Cabaret	Cocktail	Classroom	Trade
145	110	80	69	120	65	6

CONFERENCE ROOM 2

Area m2	Theatre	Banquet	Cabaret	Cocktail	Classroom	Trade
165	130	90	56	150	75	8



FULLWOOD ROOM

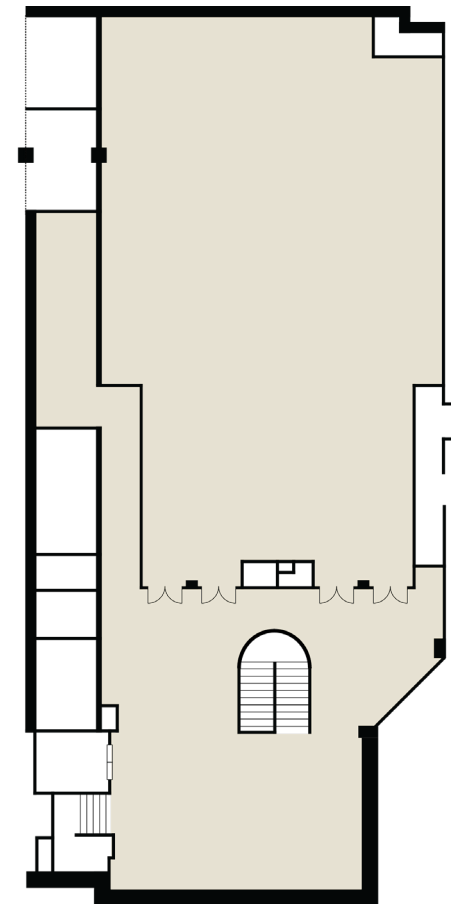
VENUE OVERVIEW

The Fullwood Room is a large flexible space that is suitable for conferences, workshops, trade exhibitions or dinners. With access to the Fullwood Foyer, this extra space allows room for a registration area, displays and/or catering.

The Terrace is also conveniently located next to the Fullwood Foyer and can be booked to have another separate space available for your guests.

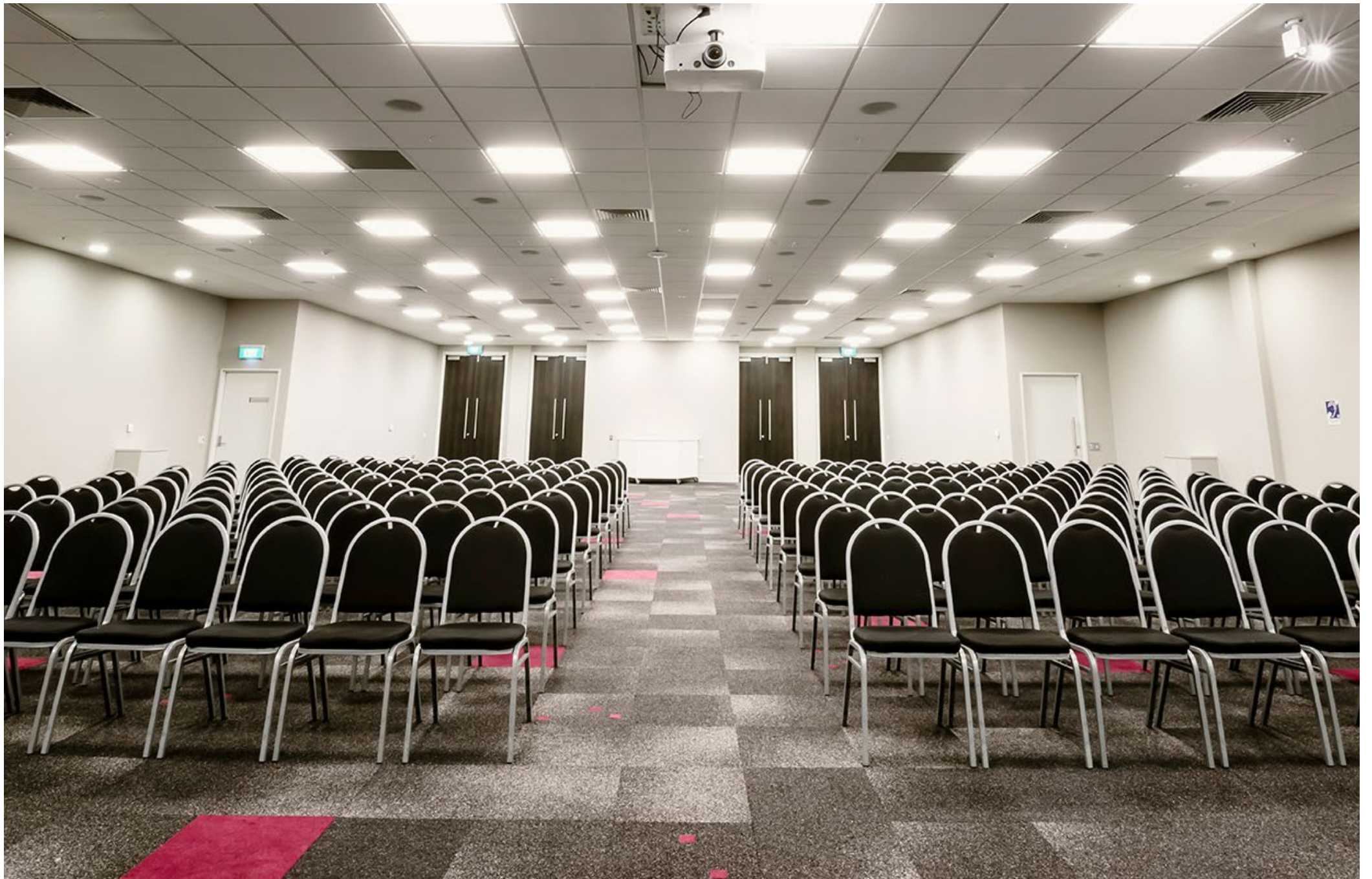
AV

- Fully equipped with a screen, projector lectern, and one wireless handheld microphone.
- Wi-Fi available.
- If you have additional AV requirements, we recommend Strawberry Sound.



FULLWOOD ROOM

Area m2	Theatre	Banquet	Cabaret	Cocktail	Classroom	Trade
350	250	180	160	400	160	25



THE TERRACE

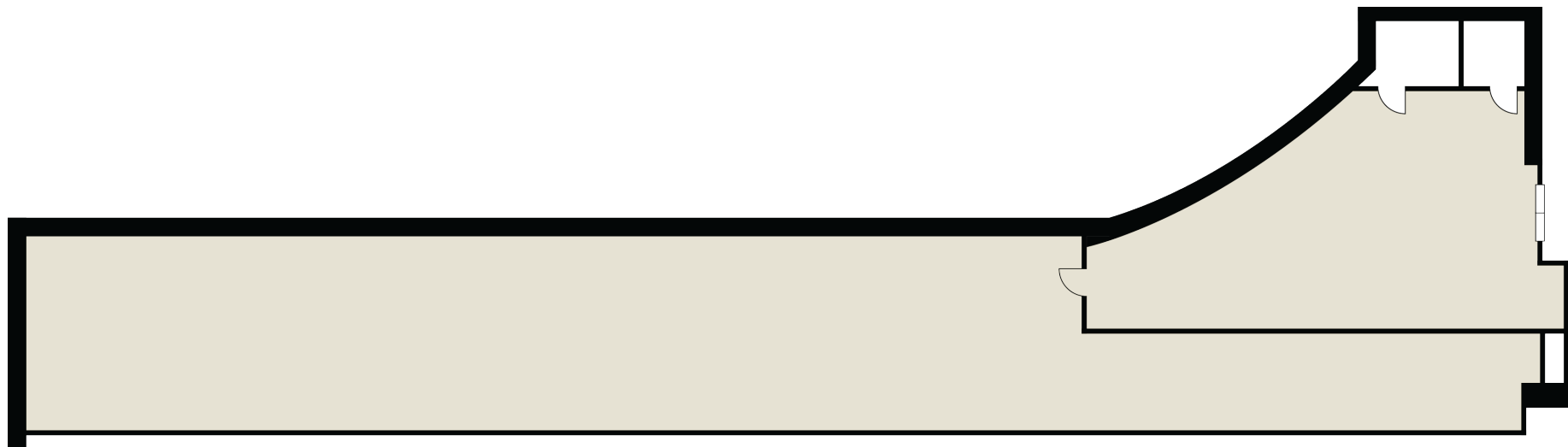
VENUE OVERVIEW

The Terrace is our hidden gem and unique space suitable for weddings, meetings, a conference breakout area and cocktail functions.

There is also access to our beautiful outdoor terrace which overlooks the majestic St Paul's Cathedral.

AV

AV can be set up in this room to suit your needs.



THE TERRACE

Area m2	Theatre	Banquet	Cabaret	Cocktail	Classroom	Trade
85	30	30	24	50	20	4 - 6





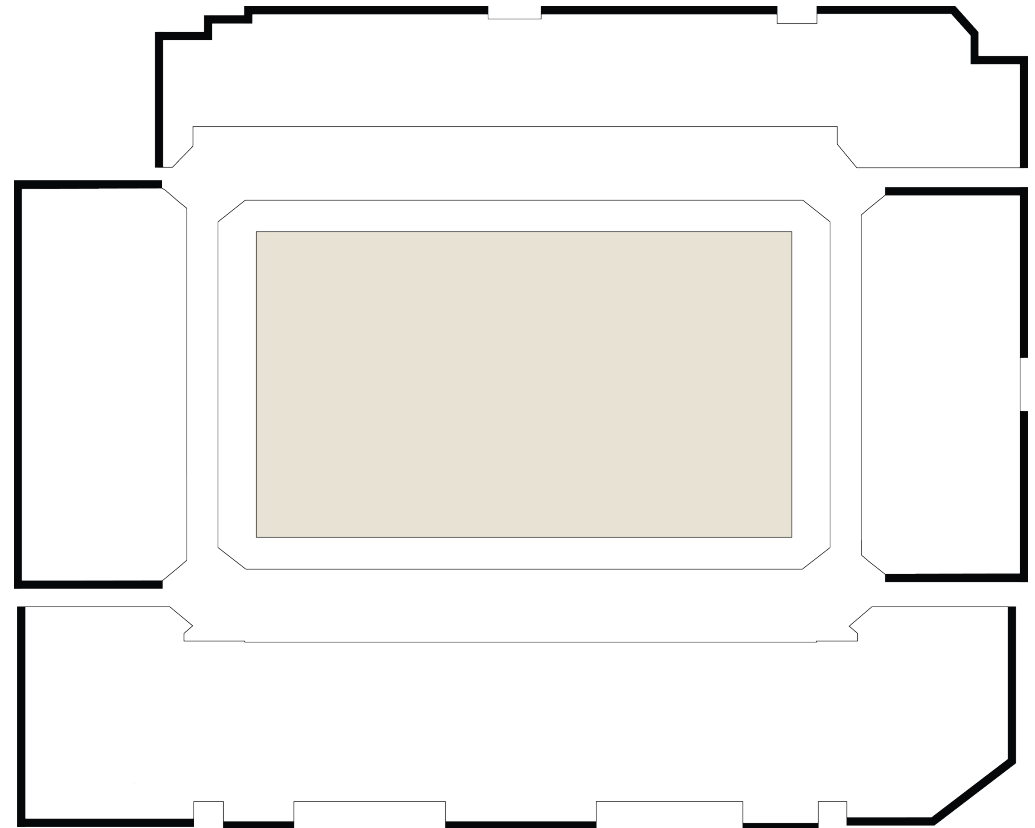
FORSYTH BARR STADIUM

THE PITCH

VENUE OVERVIEW

This is one of New Zealand's largest and most versatile events arenas and the only permanently covered natural turf Stadium in the Southern Hemisphere. Real sunlight and real grass in a modern, world class facility.

We have all of the front of house and behind the scenes facilities to accommodate any kind of show, large or small. Forsyth Barr Stadium is where performances and events truly come to life.



THE PITCH

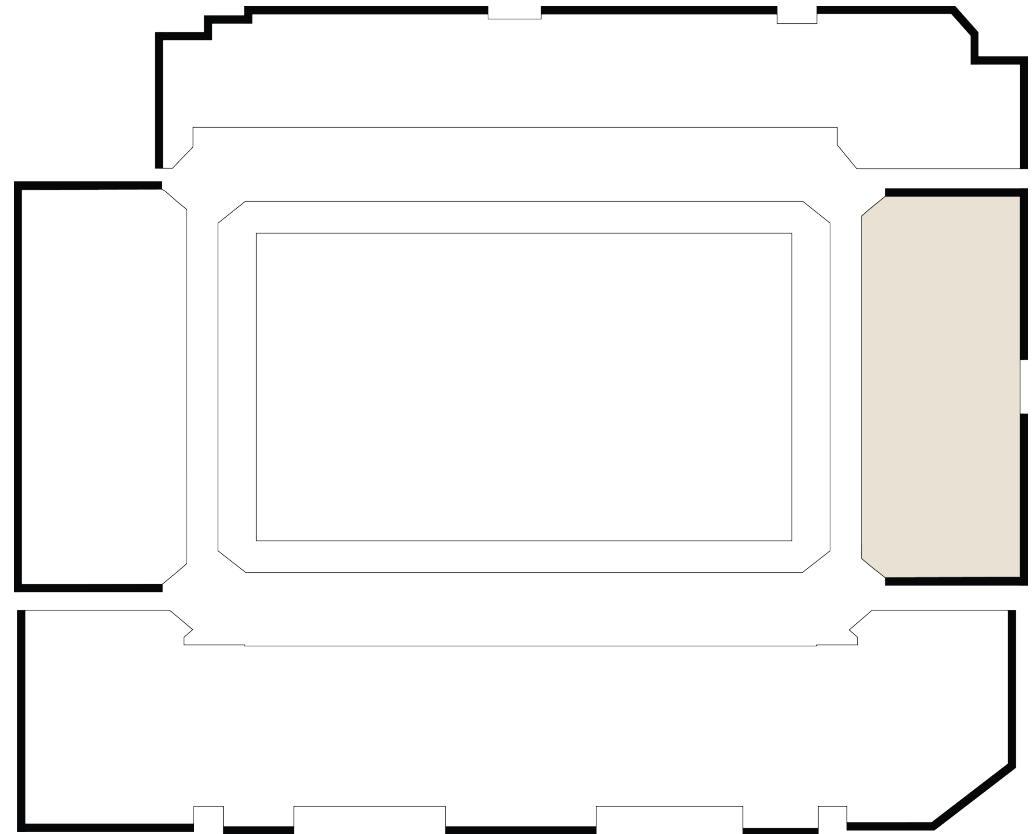
Area m2	Theatre	Banquet	Cabaret	Cocktail	Classroom	Trade
10611	5000	1000	-	2000	-	345



FORSYTH BARR STAND

VENUE OVERVIEW

The Forsyth Barr (East) Stand offers a large, fully-roofed flat area that can be catered your larger event needs.



FORSYTH BARR STAND

Area m2	Theatre	Banquet	Cabaret	Cocktail	Classroom	Trade
1770	2500	1000	-	3800	-	50 - 100



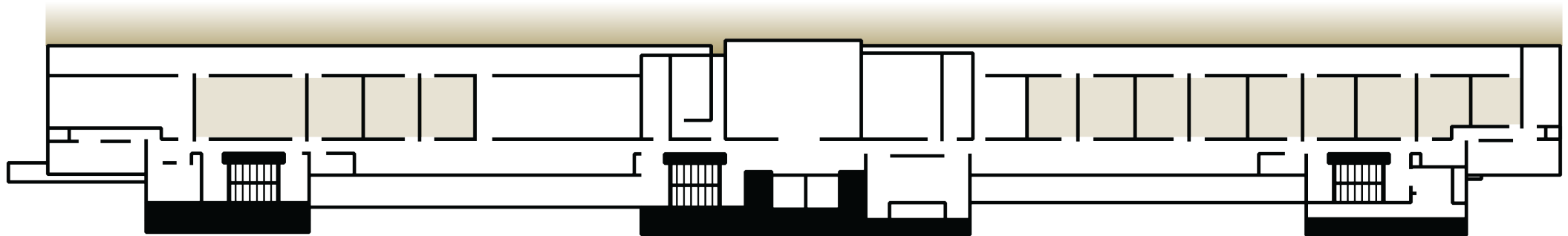
SMALL CORPORATE SUITES

VENUE OVERVIEW

With views over the Stadium bowl, each corporate suite is perfect for smaller meetings and functions and a great place from which to view Stadium events.

AV

We have Wi-Fi, data projectors, whiteboards and the full range of technical equipment you may require, while our on-site catering service means your food and coffee is served up just the way you like it.



LEVEL 3 SMALL SUITES (APPROX)

Area m2	Theatre	Banquet	Cabaret	Cocktail	Classroom	Trade
55	15	10	-	24	-	-



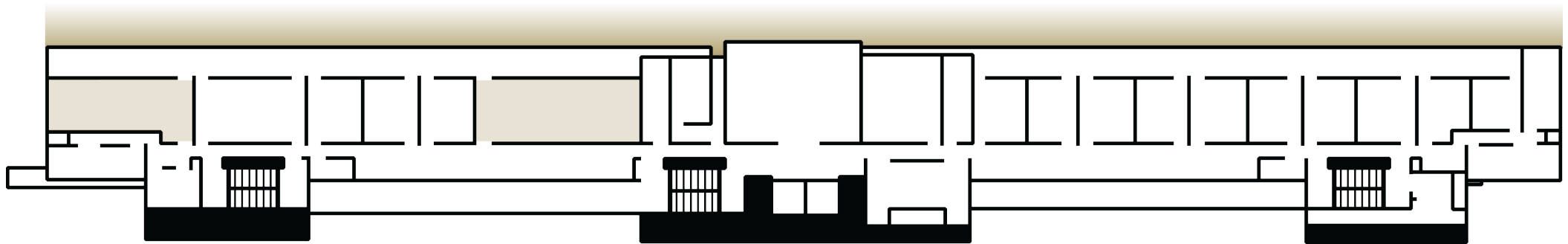
LARGE CORPORATE SUITES

VENUE OVERVIEW

Slightly bigger in size, the larger corporate suites can cater for up to 90 guests for cocktails, ideal for your conference or social function. Our on-site catering service means your food and coffee is served up just the way you like it.

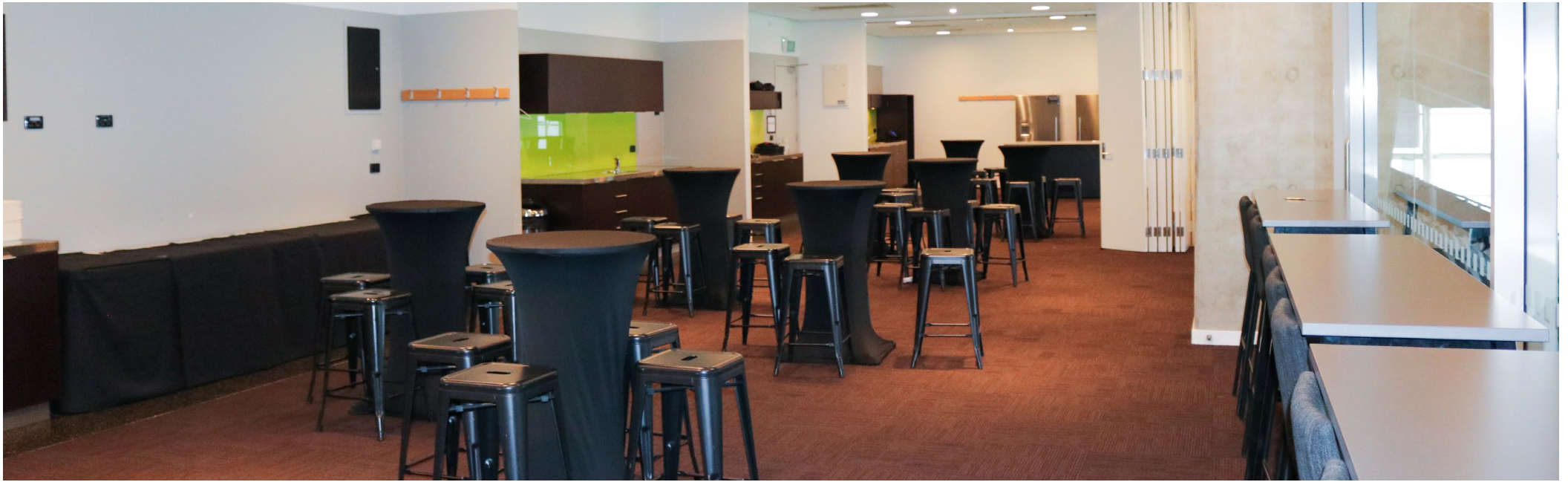
AV

We have Wi-Fi, data projectors, whiteboards and the full range of technical equipment you may require.



LEVEL 3 LARGE SUITES (APPROX)

Area m2	Theatre	Banquet	Cabaret	Cocktail	Classroom	Trade
91	70	70	48	90	30	-



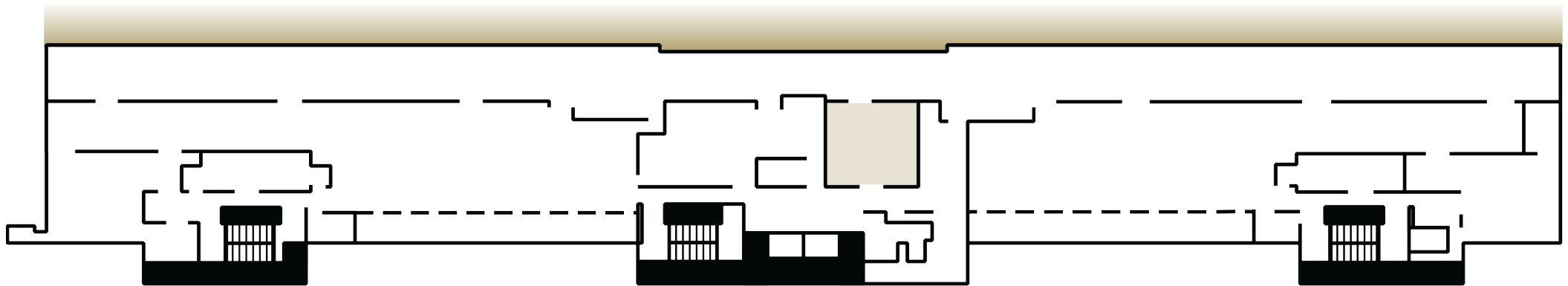
ALEXANDER McMILLAN SUITE

VENUE OVERVIEW

A distinguished design, the Alexander McMillan Suite lends itself to smaller meetings or functions where a more intimate space is desired.

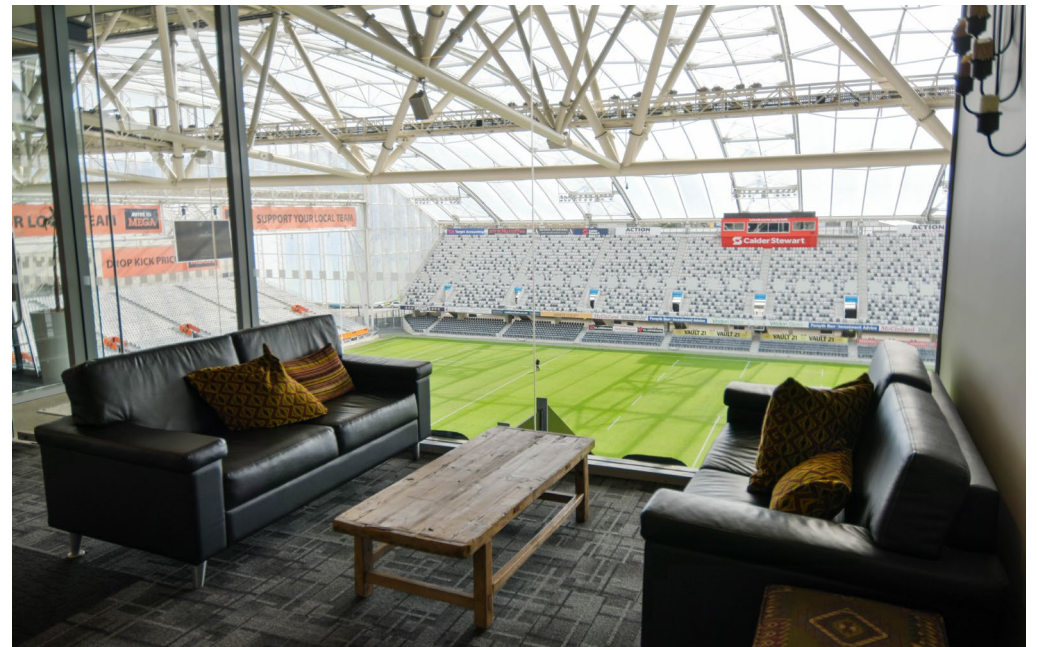
AV

We have Wi-Fi, data projectors, whiteboards and the full range of technical equipment you may require, while our on-site catering service means your food and coffee is served up just the way you like it.



ALEX MCMILLAN SUITE

Area m2	Theatre	Banquet	Cabaret	Cocktail	Classroom	Trade
41	30	30	24	60	12	-



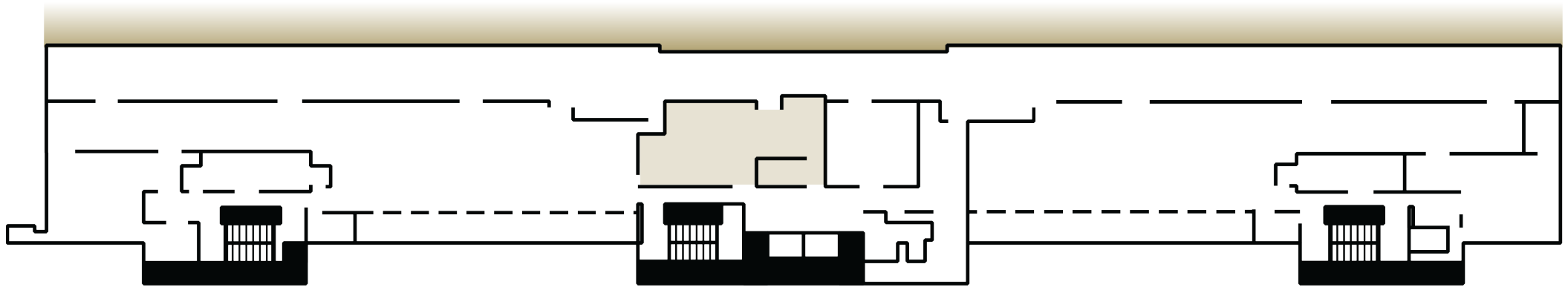
LOGAN POINT SUITE

VENUE OVERVIEW

Slightly bigger in size, this suite can cater for up to 70 guests for cocktails, ideal for your conference or social function. Our onsite catering service means your food and coffee is served up just the way you like it.

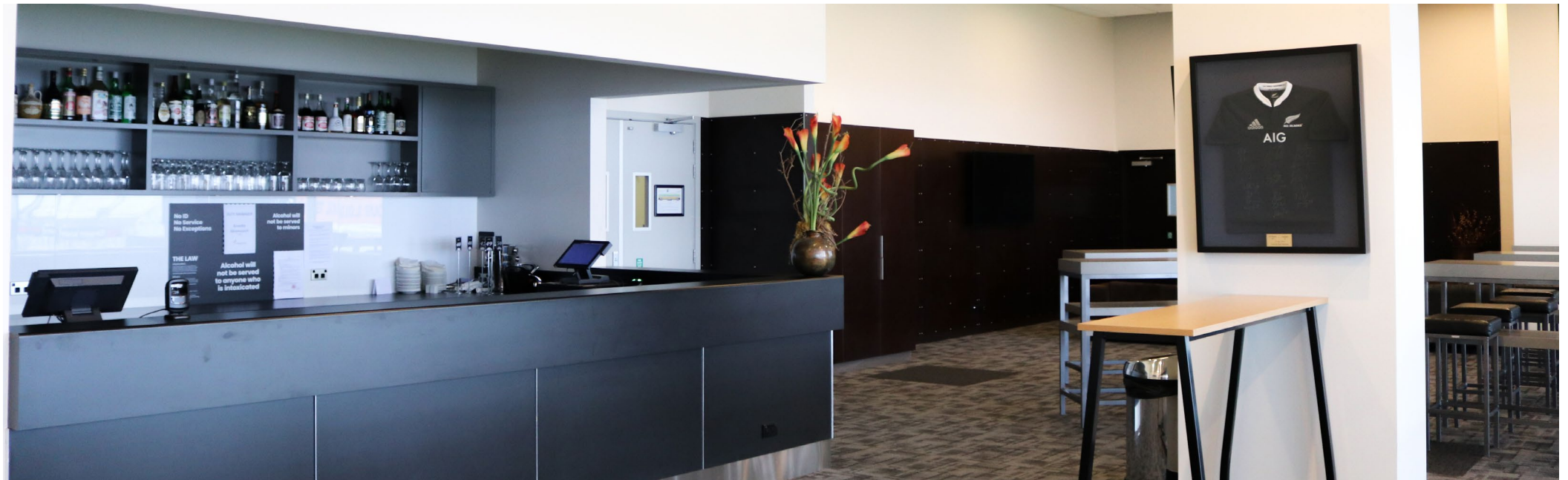
AV

We have Wi-Fi, data projectors, whiteboards and the full range of technical equipment you may require, while our on-site catering service means your food and coffee is served up just the way you like it.



LOGAN POINT SUITE

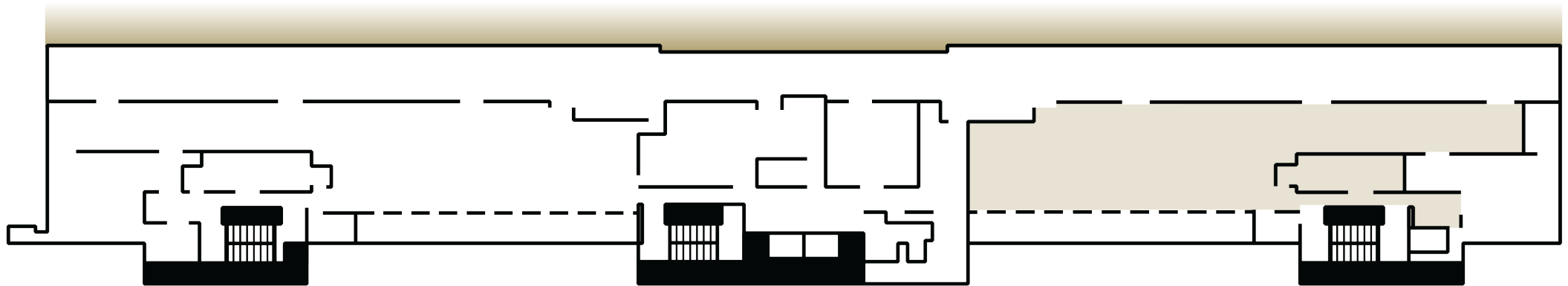
Area m2	Theatre	Banquet	Cabaret	Cocktail	Classroom	Trade
126	50	70	24	100	25	3



EAST LOUNGE

VENUE OVERVIEW

This lounge is a spacious and adaptable venue that can accommodate a wide variety of events. Whether you're planning a wedding, business conference, community gathering, or educational event, this lounge offers a magnificent setting with a view of the Stadium Bowl. It's an ideal location for hosting occasions of all kinds and offers a unique and spectacular setting for your guests.



EAST LOUNGE

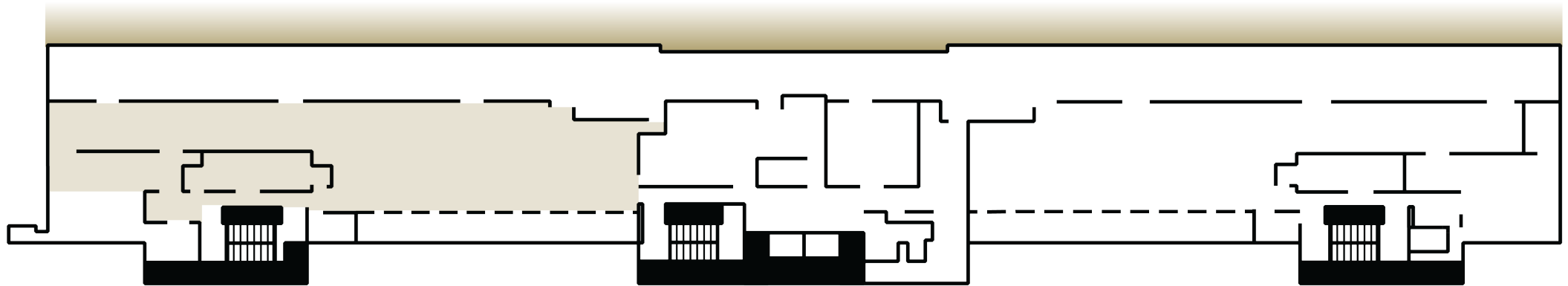
Area m ²	Theatre	Banquet	Cabaret	Cocktail	Classroom	Trade
376	260	200	160	400	120	17



WEST LOUNGE

VENUE OVERVIEW

This lounge is a large and highly flexible event space that can be configured to suit the needs of various occasions, including weddings, business meetings, community gatherings, and educational conferences. With a panoramic view of the Stadium Bowl, it offers a one-of-a-kind and breath-taking setting to entertain your guests. The lounge is equipped with all the necessary amenities to make your event a success and its location makes it easily accessible for your attendees. It's a perfect venue for hosting an array of events, leaving a lasting impression on your guests.



EAST LOUNGE

Area m2	Theatre	Banquet	Cabaret	Cocktail	Classroom	Trade
340	220	200	160	400	120	17



OUR SERVICES



ROAD CLOSURE

If the loading ramp is required for pack in and out, then a Traffic Management Plan needs to be put in place to close off Harrop Street.

The cost for closure is \$300 + GST. If you require the road to be closed for more than one day a charge of \$85 + GST applies for each additional day.



SECURITY

If this event is outside of our office hours 8:30am - 5:00pm Monday to Friday, security is required at a cost of \$45 + GST per guard per hour. The event co-ordinator will determine the number of security guards required.

Please note there is a minimum 4 hour call out.



EVENT CO-ORDINATOR

As part of our service, you also have the full support of an Event Coordinator to ensure every detail is covered and your event is a huge success.

GET IN TOUCH



NICOLE CARVELL

Business Development Manager

021 650 092

nicole.carvell@dunedinvenues.co.nz

dunedin
venues