

dunedin Ōtepoti, New Zealand

THE VILLAGE OF LEARNING

In collaboration with

dunedin
venues





World Class Speakers

A collaboration between **DVML**, **Otago Polytechnic** and **University of Otago**.
This program gives conference organisers access to content and provides services
that will enhance any business event program in Dunedin.





Professor John Reynolds

Professor John Reynolds is a neuroscientist whose primary focus is on learning and memory mechanisms, Parkinson's disease and stroke.



Dr Jemma Geoghegan

Dr Jemma Geoghegan is an evolutionary biologist and virologist with a strong research focus on emerging infectious disease, determining the fundamental patterns and processes of viral evolution, ecology and emergence.



Professor Lisa Matisoo-Smith

Professor Lisa Matisoo-Smith's research focuses on biological anthropology, human variation, molecular anthropology, human evolution and ancient DNA.



Associate Professor Jo Kirman

Associate Professor Jo Kirman is the Director of Health Sciences First Year and an immunologist.



Professor Peter Dearden

Professor Peter Dearden's research focuses on evolution, development and genome evolution.



Associate Professor Rosaline Richards

Associate Professor Rosaline Richards is the Director of the Centre for Pacific Health, and Associate Dean (Pacific) for the Dunedin School of Medicine.

Health Sciences



Sciences



Associate Professor Anne-Marie Jackson

Anne-Marie Jackson is an Associate Professor in Māori physical education and health, and established Te Koronga research group and Coastal People: Southern Skies – a national Centre of Research Excellence.



Professor David Hutchinson

Professor David Hutchinson is a quantum physicist and Director of the Dodd-Walls Centre – a national Centre of Research Excellence.



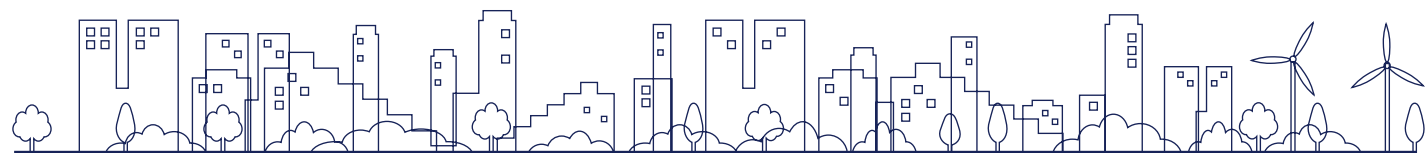
Professor Christina Hulbe

Professor Christina Hulbe is a geophysicist who studies how and why polar ice sheets change over time.



Dr Christina McGraw

Dr Christina McGraw has broad research interests in analytical and marine chemistry.





Professor Liam McIlvanney

Professor Liam McIlvanney is the inaugural Stuart Professor of Scottish Studies and Co-Director of the Centre for Irish and Scottish Studies.



Associate Professor Karyn Paringatai

Associate Professor Karyn Paringatai's research interests are in a number of areas that intersect at various points. To name one: sociological issues surrounding Māori urbanisation and Māori identity development and maintenance.



Professor James Maclaurin

Professor James Maclaurin is a philosopher of science with particular interest in computing and information science - particularly artificial intelligence and its impact on humanity.



Associate Professor Marcelle Dawson

Associate Professor Marcelle Dawson is interested in researching and teaching about social transformation, and she has a particular interest in alternatives to capitalism.

Humanities



The Village Of Learning

Business



Angus Pauley - Audacious Entrepreneurship workshop

Angus Pauley is the Programme Facilitator at Startup Dunedin. He plans and delivers all of their entrepreneurship workshops.



Associate Professor Ivan Diaz-Rainey

Associate Professor Ivan Diaz-Rainey's policy-focused research spans both finance and innovation research with particular focus on issues related to financial regulation, financial innovation, energy policy and climate change.



Professor Holger Regenbrecht

Professor Holger Regenbrecht has been working in the fields of virtual and augmented reality for over 15 years.



Dr Chris Paton

Dr Chris Paton is the course director for the new online digital health postgraduate programmes (PGDip and PGCert) and the head of the Global Health Informatics research group at the University of Oxford working on research projects based in Kenya and Vietnam.



Associate Professor Sara Walton

Associate Professor Sara Walton teaches and researches in the area of sustainability and business often with a future focus.





**Associate Professor
Caroline McCaw**

Caroline is Academic Leader for Communication and teaches across a range of courses including Interaction Design and Studio Projects. She is involved in a wide range of creative, local community and regional development projects often working with collaborative student-staff teams, and local community groups, including museums.



Professor Samuel Mann

Professor Samuel Mann teaches for Capable NZ - Otago Polytechnic's school specialising in professional practice and work-based learning. He's responsible for the development of Education for Sustainability at Otago Polytechnic, committed to making every graduate think and act as a sustainable practitioner.



**Associate Professor
Tobias Danielmeier**

Tobias Danielmeier is Associate Professor of Architecture and academic leader in the College of Creative Practice and Enterprise at Otago Polytechnic. His research and professional practice investigate the interface between industrial architecture and spaces for hospitality.



Federico Freschi

Formally Executive Dean of the Faculty of Art, Design and Architecture at the University of Johannesburg, South Africa. He holds a PhD in History of Art, and undergraduate qualifications in fine arts and opera. His academic field of research is in art history, with a focus on the intersections of identity, politics, and imaginaries of belonging in art, design and architecture.



**Associate Professor
Jean Ross**

Jean is a Principal Lecturer. She is a Registered Nurse, holds a BN and a Master of Arts, and completed her Doctorate in 2017. From 1994-2003, she was co-director of the National Centre for Rural Health and instrumental in the development of interdisciplinary postgraduate nursing education.



Professor Sally Baddock

Professor Sally Baddock has developed a strong platform of research over the last 20 years in the area of infant behaviour and physiology during sleep, and the impact of sleep practices on sudden unexpected death in infancy (SUDI).





Dr Richard Mitchell

Professor Richard Mitchell's expertise lies in five broad areas: consumer behaviour, experience design, food and wine tourism, design thinking for business, and learning for professionals. Richard has presented at academic and industry conferences in over a dozen countries.



Associate Professor Dr Lesley Gill

Lesley is an Associate Professor in the School of Business, with a training emphasis on Leadership, Human Resource Development, and Organisational Behaviour, as well as providing supervision for Internship projects.



Karole Hogarth

Associate Professor Karole Hogarth is the Head of the School of Nursing and has 15 years of academic experience teaching sciences in health courses. She has strong research interests in interprofessional education, curriculum development, science education, rural nursing, and improving outcomes for Māori learners in health courses.



Professor Jane Venis

Professor Jane Venis is a multi-media artist, musician and writer. Her studio practice focuses on the absurdities and concerns of contemporary popular culture, which is expressed through the making of objects, video, sound and performance works.



Dr David Woodward

Dr David Woodward is senior lecturer in apiculture and programme manager of the apiculture portfolio at the central campus of Otago Polytechnic. David is also a facilitator, assessor, and academic mentor at Capable NZ - working in the independent learning pathway with students on the Bachelor of Applied Management, Graduate Diploma in Tertiary Education, Master of Professional Practice and Doctor of Professional Practice qualifications.



Ōtepoti, New Zealand
dunedin

Thank You

dunedin
venues

