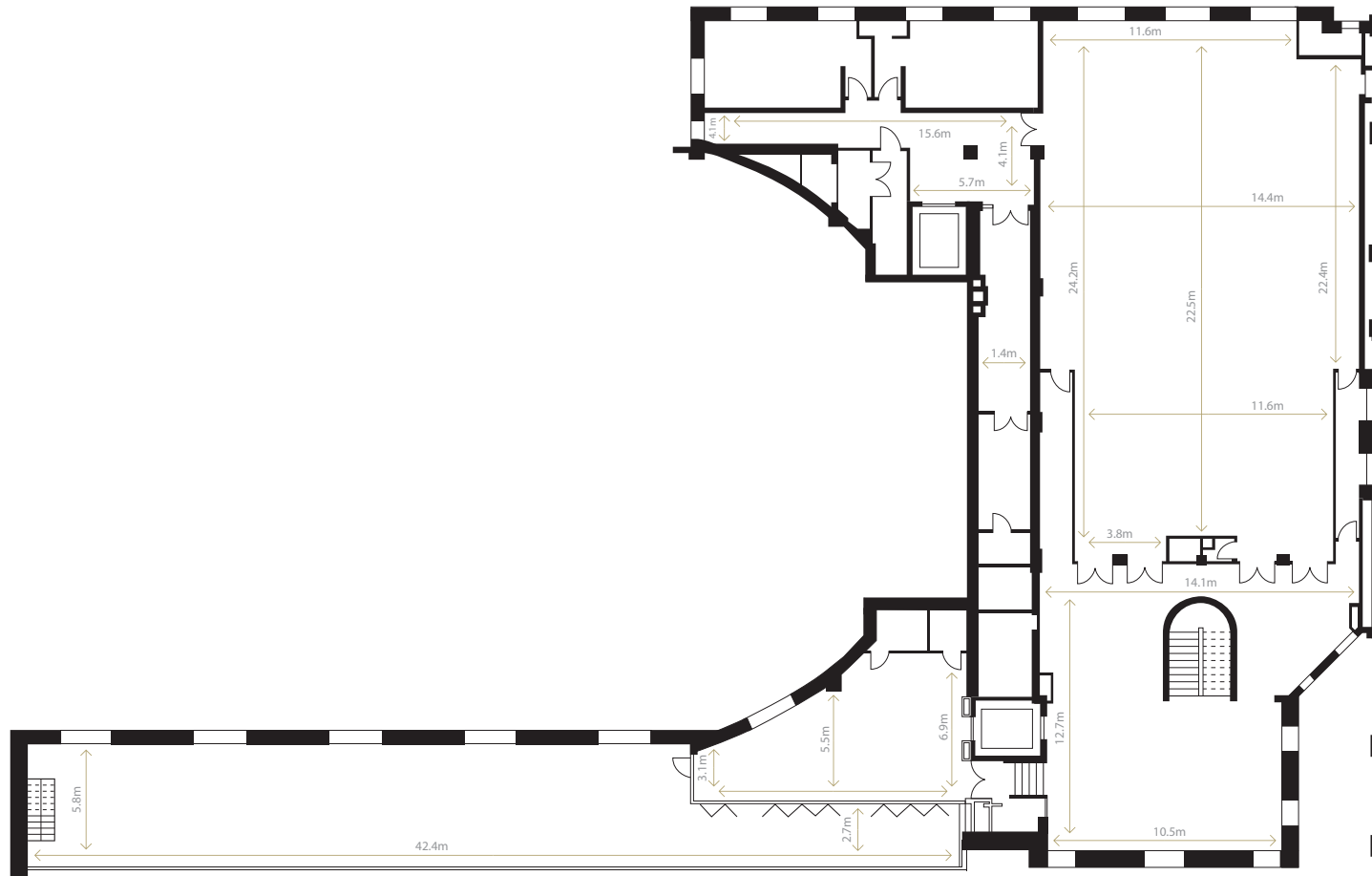


# SECOND FLOOR



CEILING HEIGHTS	
<b>The Terrace</b>	3.5 m
<b>Fullwood Room</b>	3.3 m
<b>Fullwood Foyer</b>	3.5 m
<b>Toilet Hallway</b>	2.5 m



**THE TERRACE | CAPACITY CHART**

Area m2	Theatre	Banquet	Cabaret	Cocktail	Classroom	Trade
85	30	30	24	50	20	4-6

**FULLWOOD ROOM | CAPACITY CHART**

Area m2	Theatre	Banquet	Cabaret	Cocktail	Classroom	Trade
350	250	180	160	400	160	25