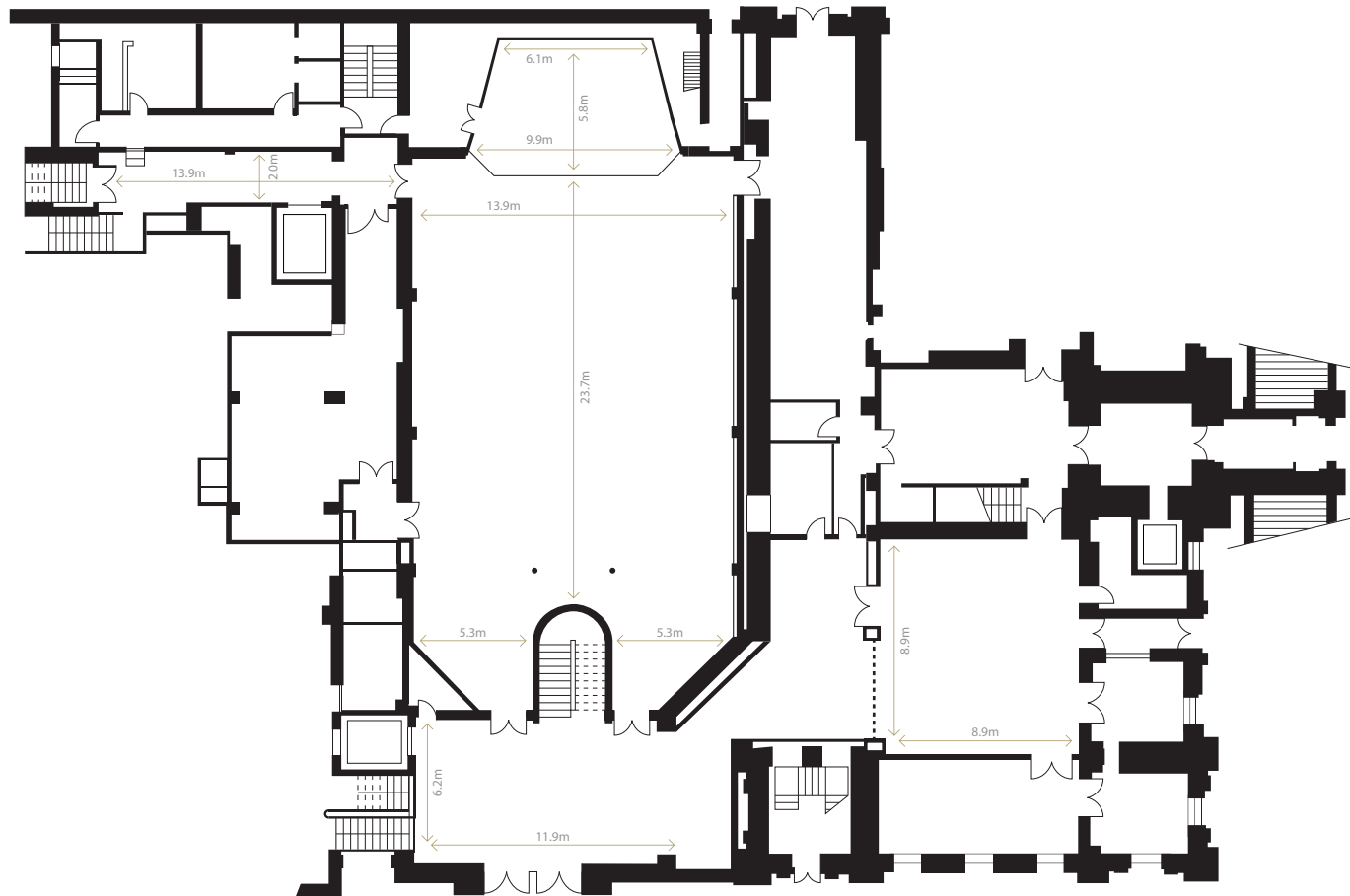


GROUND LEVEL



CEILING HEIGHTS	
Glenroy Auditorium	7.8 m
Glenroy Auditorium (Carpeted Area)	3.2 m
Back of Stage	6.2 m
Front of Stage	7.3 m
Hallway between Glenroy & Town Hall	2.4 m



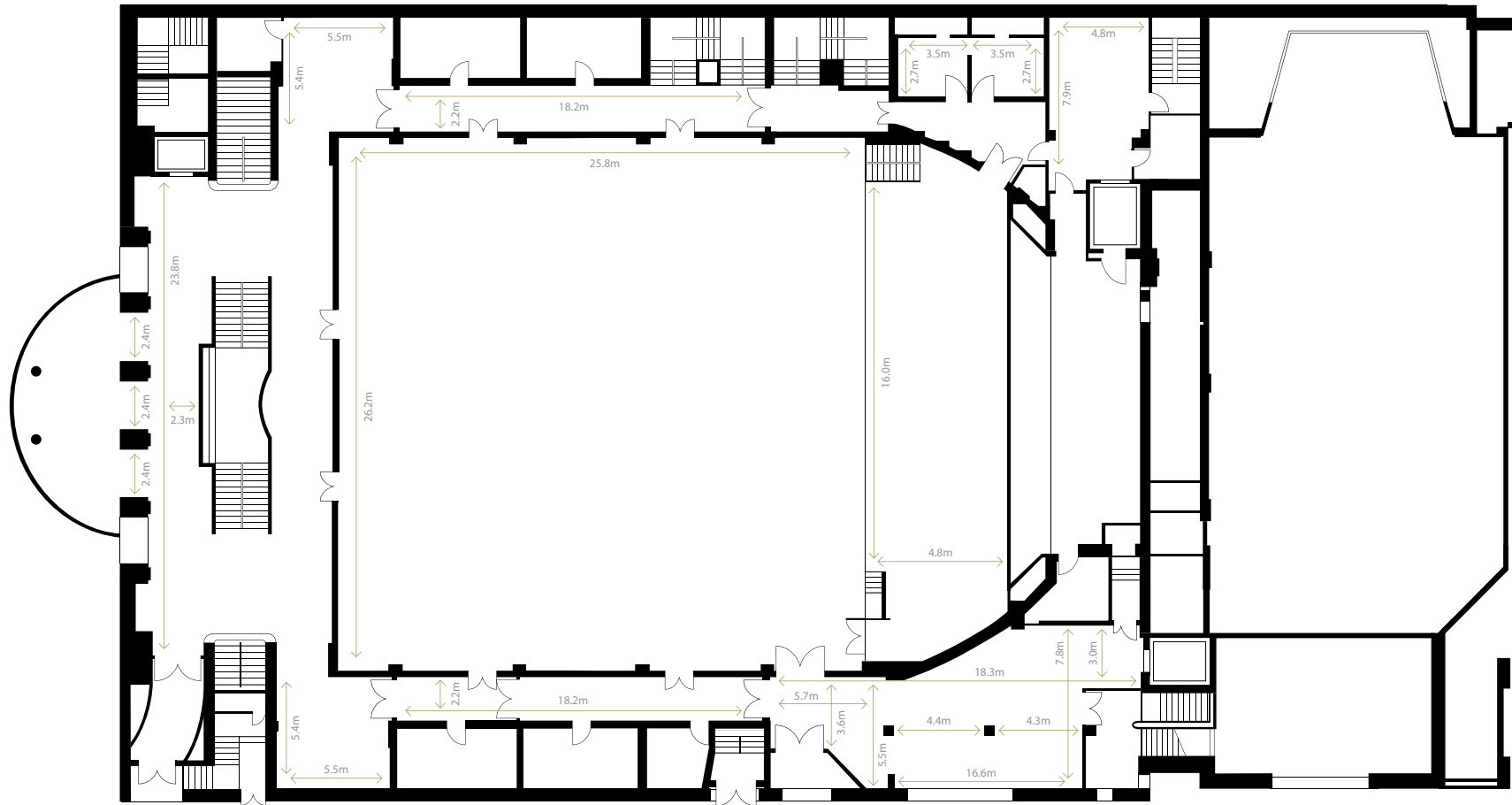
GLENROY AUDITORIUM | CAPACITY CHART

Area m2	Theatre	Banquet	Cabaret	Cocktail	Classroom	Trade
330	422	220	160	600	200	23-30

GLENROY EXTENDED FOYER | CAPACITY CHART

Area m2	Theatre	Banquet	Cabaret	Cocktail	Classroom	Trade
77	30	30	24	50	15	4

UPPER GROUND LEVEL



CEILING HEIGHTS

Townhall Foyer

3.9 m

Foyer Hallways

3.7 m

Under Gallery

3.0 m

Stage

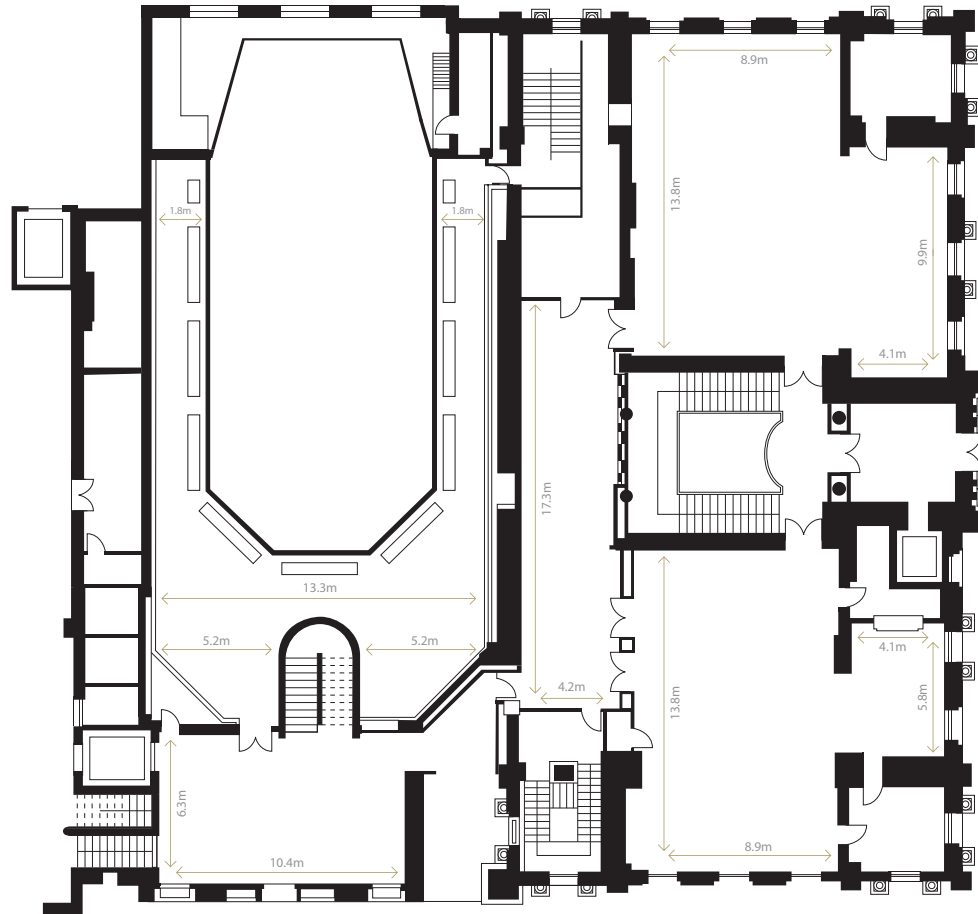
14.6 m



DUNEDIN TOWN HALL | CAPACITY CHART

Area m2	Theatre	Banquet	Cabaret	Cocktail	Classroom	Trade
664	2145	550	360	1000	300	35 - 60

MEZZANINE FLOOR



CEILING HEIGHTS	
Mezzanine Foyer	3.9 m
Conference Room 1	3.7 m
Conference Room Hallway	2.6 m
Conference Room 2	3.7 m



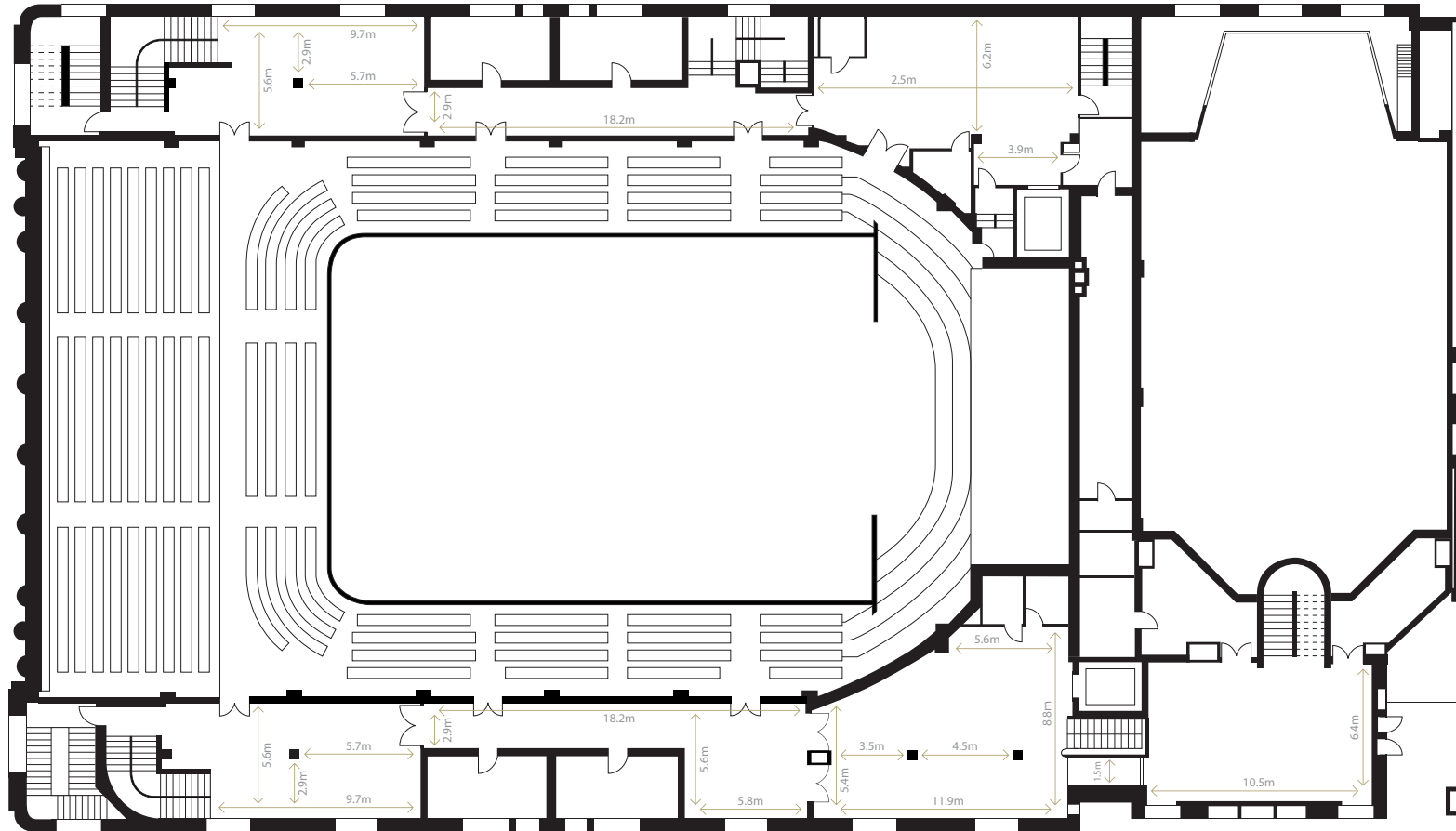
CONFERENCE ROOM 1 | CAPACITY CHART

Area m2	Theatre	Banquet	Cabaret	Cocktail	Classroom	Trade
145	110	80	69	120	65	6

CONFERENCE ROOM 2 | CAPACITY CHART

Area m2	Theatre	Banquet	Cabaret	Cocktail	Classroom	Trade
165	130	90	56	150	75	8

FIRST FLOOR



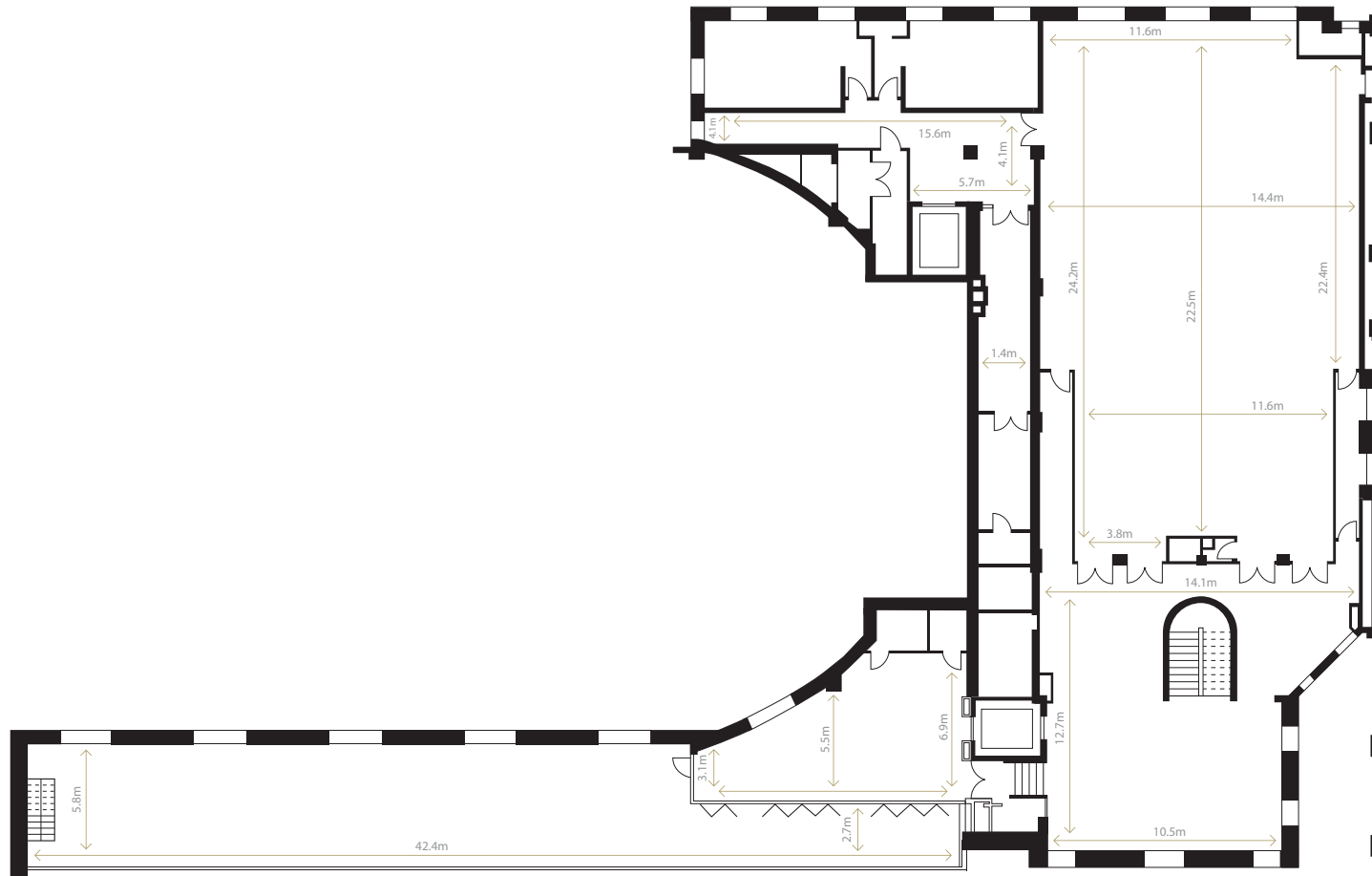
CEILING HEIGHTS	
Townhall	
Gallery Foyer	3.5 m
Lower Chesters	3.4 m



CHESTERS LOUNGE | CAPACITY CHART

Area m2	Theatre	Banquet	Cabaret	Cocktail	Classroom	Trade
109	50	50	30	24	4	24

SECOND FLOOR



CEILING HEIGHTS	
The Terrace	3.5 m
Fullwood Room	3.3 m
Fullwood Foyer	3.5 m
Toilet Hallway	2.5 m



THE TERRACE | CAPACITY CHART

Area m2	Theatre	Banquet	Cabaret	Cocktail	Classroom	Trade
85	30	30	24	50	20	4-6

FULLWOOD ROOM | CAPACITY CHART

Area m2	Theatre	Banquet	Cabaret	Cocktail	Classroom	Trade
350	250	180	160	400	160	25